

FACT SHEET

HIV/AIDS IN THE U.S.

THE U.S. EPIDEMIC TODAY^{1,2,4}

- Number of people living with HIV: 1.1 million
- Number of people living with AIDS: 468,000
- Number of AIDS deaths since the beginning of epidemic: 583,298, including 14,561 in 2007
- Number of new HIV infections in 2006: 56,300
- Frequency of new HIV infections: One every 9.5 minutes
- Percent of people infected with HIV who don't know it: 21 percent

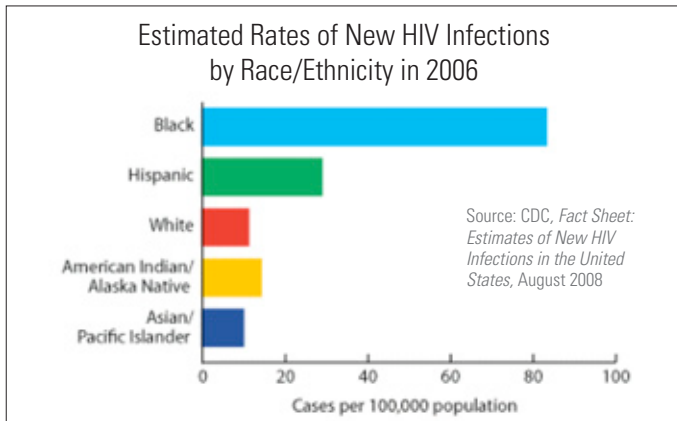
OVERVIEW OF THE HIV/AIDS EPIDEMIC IN THE U.S.

By Sex

- In 2007, approximately 74 percent of HIV/AIDS diagnoses were in males and 26 percent in females.¹
- African-American women accounted for two-thirds (65 percent) of new AIDS cases among women in 2007.⁴

By Race/Ethnicity

- In 2007, racial and ethnic minorities represented the majority of new AIDS cases (71 percent), new HIV infections (67 percent), people living with HIV/AIDS (67 percent), and AIDS deaths (70 percent).⁴
- Although African Americans made up only 13 percent of the population in the 33 states with long-term, confidential, name-based HIV reporting, they accounted for almost half

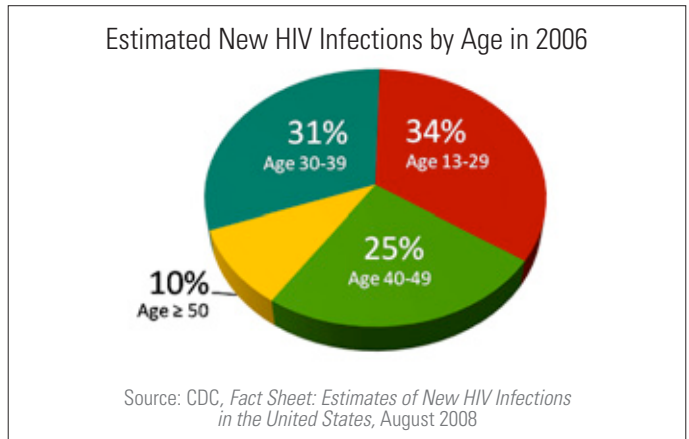


of the estimated number of HIV/AIDS diagnoses made during 2006.³

- The rate of HIV infection among African Americans is higher than the rates in several African countries funded by the President's Emergency Plan for AIDS Relief (PEPFAR).⁵

By Age

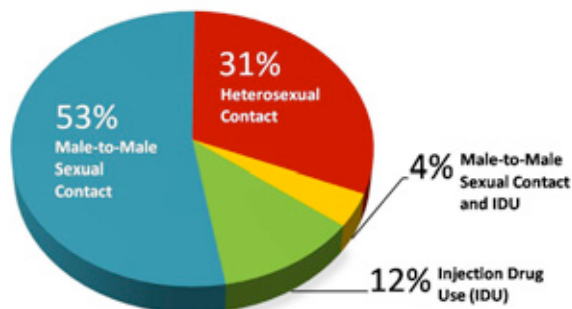
In 2006, people between the ages of 13–29 and 30–39 accounted for the largest proportion of newly diagnosed HIV/AIDS cases. Among young people, teen girls, MSM, and minorities have been particularly affected.⁴



By Transmission Category^{2,4}

- The majority of new HIV infections—53 percent in 2006—are among men who have sex with men (MSM) but the percentage is lower than it was earlier in the epidemic. However, this is only group among whom new infections are on the rise. Young men aged 13–29 accounted for 38 percent of infections among gay and bisexual men.
- Heterosexual transmission has accounted for a growing share of new HIV infections (31 percent in 2006), but incidence among this group has declined in recent years.
- New infections due to injection drug use declined by approximately 80 percent between 1988–90 and 2003–2006, accounting for 12 percent of all new infections in 2006. This trend reflects the impact of harm reduction

Estimated Number of New HIV Infections by Transmission Category in 2006



Source: CDC, *Fact Sheet: Estimates of New HIV Infections in the United States*, August 2008

programs.

By Location of AIDS Cases

AIDS cases have been reported in all 50 states and the District of Columbia. Washington, D.C., has the highest AIDS case rate of any city in the nation. The Northeast had the highest AIDS case rate per 100,000 in 2007 (16.4), followed by the South (15.1), West (8.9), and Midwest (6.1).⁴

Top Ten States by Cumulative Reported AIDS Cases and by AIDS Case Rate Per 100,000 in 2007

State	Cumulative AIDS Cases through 2007	State	AIDS Case Rate 2007
New York	181,461 (17.6%)	District of Columbia	148.1
California	148,949 (14.4%)	U.S. Virgin Islands	31.4
Florida	109,524 (10.6%)	New York	24.9
Texas	72,828 (7.1%)	Maryland	24.8
New Jersey	50,694 (4.9%)	Florida	21.7
Pennsylvania	35,489 (3.4%)	Puerto Rico	21.5
Illinois	35,066 (3.4%)	Louisiana	20.5
Georgia	33,847 (3.3%)	Delaware	19.8
Maryland	31,931 (3.1%)	Georgia	19.7
Puerto Rico	30,736 (3.0%)	South Carolina	16.8
Subtotal	730,525 (70.9%)	--	--
U.S. Total	1,030,832 (100%)	U.S. Case Rate	12.5

Source: The Kaiser Family Foundation, *Fact Sheet: The HIV/AIDS Epidemic in the United States*, September 2009

TRENDS IN AIDS DIAGNOSES AND DEATHS¹⁴

During the mid-to-late 1990s, advances in HIV treatment slowed the progression of HIV infection to AIDS, leading to dramatic declines in deaths among persons with AIDS living

in the U.S. However, AIDS remains a leading cause of death among certain groups, and more than half a million people have died of AIDS since the beginning of the epidemic.

Estimated numbers of AIDS diagnoses, deaths, and persons living with AIDS, 2002–2006

	2002	2003	2004	2005	2006	Cumulative 1981–2006
AIDS diagnoses	38,132	38,538	37,726	36,552	36,828	982,498
Deaths of persons with AIDS	16,948	16,690	16,395	16,268	14,016	545,805
Persons living with AIDS	350,419	372,267	393,598	413,882	436,693	NA

Source: CDC, *Fact Sheet: HIV/AIDS in the United States*, August 2008

HIV/AIDS TESTING, PREVENTION, AND TREATMENT

- The CDC recommends routine HIV testing for all people aged 13–64, yet 21 percent of those infected with HIV don't know it, and 36 percent are diagnosed late in their illness.⁴
- Prevention strategies include barrier methods such as condoms; post-exposure prophylaxis (PEP); and behavioral interventions. In addition, syringe exchange programs have been shown to significantly reduce the transmission of HIV without increasing rates of injection drug use.⁶ Studies of pre-exposure prophylaxis (PREP) with antiretroviral drugs, microbicides, and vaccines are under way.
- Treatment advances such as highly active antiretroviral treatment (HAART) have substantially reduced AIDS-related morbidity and extended the lives of many. Nonetheless, many people who need treatment do not have access to it, and treatment is not a cure.

References

1. CDC. *HIV/AIDS Surveillance Report*. Vol. 19; 2009.
2. CDC. *Fact Sheet: Estimates of New HIV Infections in the United States*; August 2008.
3. CDC. *Fact Sheet: HIV/AIDS in the United States*; August 2008.
4. The Kaiser Family Foundation. *Fact Sheet: The HIV/AIDS Epidemic in the United States*; February 2009.
5. Wilson P, Wright K, Isbell M. *Left Behind: Black America: A Neglected Priority in the HIV/AIDS Epidemic*. Los Angeles: Black AIDS Institute; 2008.
6. amfAR. *The Effectiveness of Harm Reduction in Preventing the Transmission of HIV/AIDS*. New York: amfAR; 2007.

amfAR[™]
AIDS RESEARCH

amfAR, The Foundation
for AIDS Research
www.amfar.org

120 Wall Street, 13th Floor
New York, NY 10005-3908, USA
T: +1 212.806.1600
F: +1 212.806.1601

1150 17th Street, NW, Suite 406
Washington, DC 20036-4622, USA
T: +1 202.331.8600
F: +1 202.331.8606

amfAR/TREAT Asia
Exchange Tower, 21st Floor, Suite 2104
388 Sukhumvit Road, Klongtoey, Bangkok 10110, Thailand
T: +66 (0)2 663.7561
F: +66 (0)2 663.7562